

Water Fluxes and LAI at LBA-MIP

Hewley and Marcos
UFV

Models analyzed

- CLM3.0
- CLM3.5
- CLM3_DP
- CLM3_OOTB
- CLM3_GW
- DGVM3.5
- IBIS
- NOAH_DV
- NOAH_STD
- SPA
- SSIB2

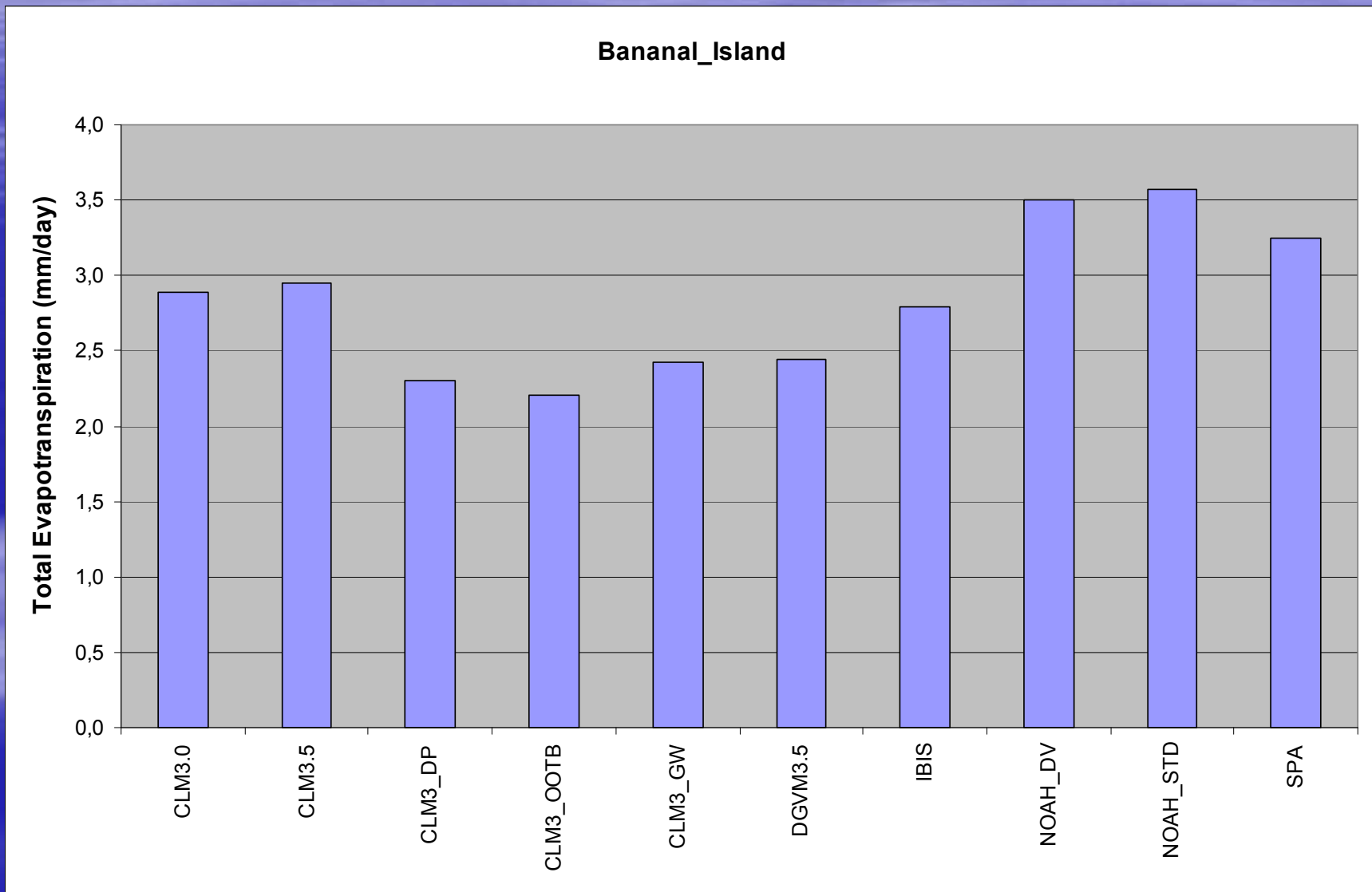
Sites analyzed

- BAN – savanna / deciduous forest Bananal Isl.
- PDG – savanna / deciduous forest São Paulo
- K34 – evergreen forest Manaus
- K67 – evergreen forest Santarém
- K83 – logged evergreen forest Santarém
- Jaru – evergreen forest Ji-Paraná
- FNS – pasture Ji-Paraná
- K77 – pasture Santarém

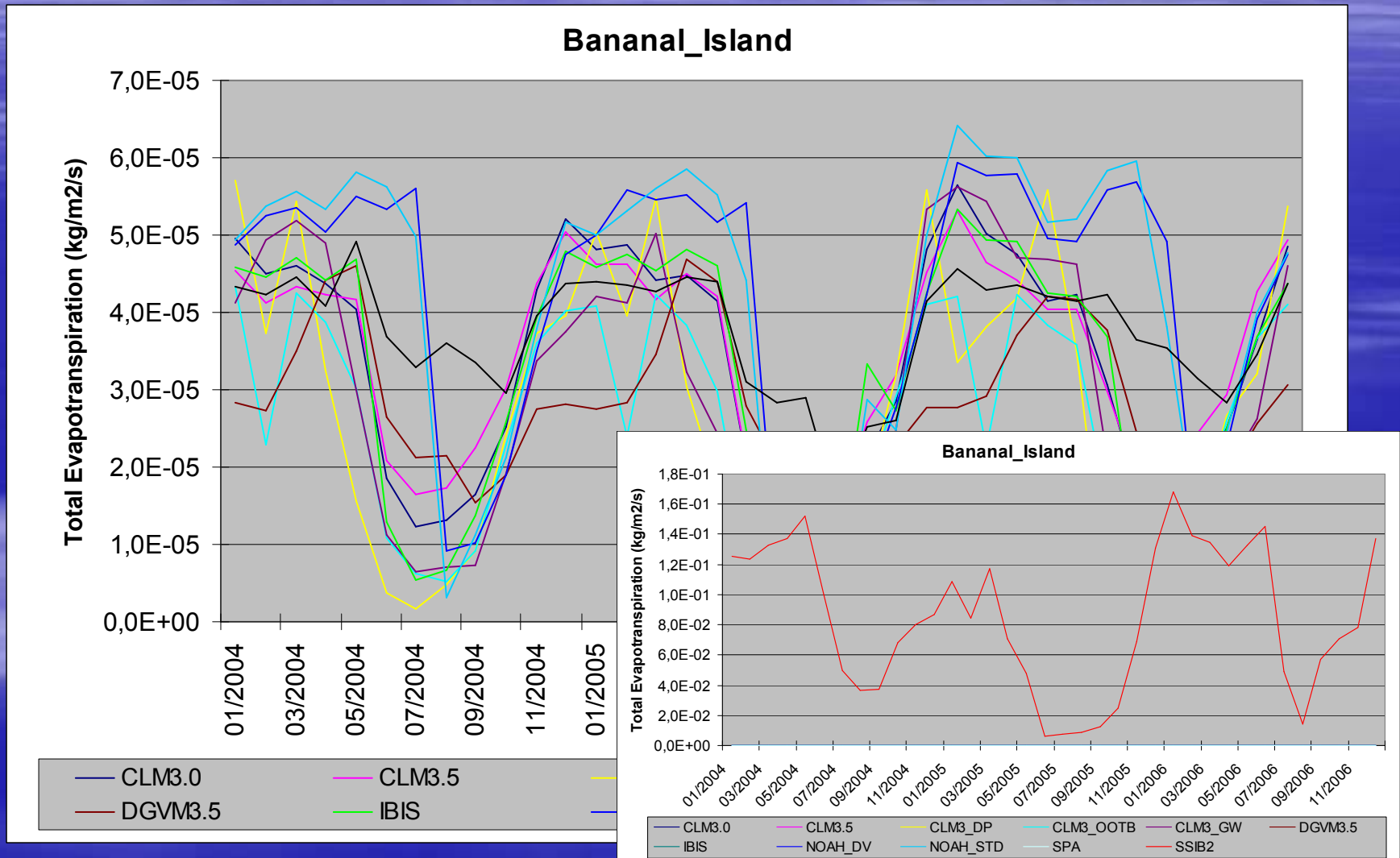
Results for water fluxes

- Results presented for
 - P
 - Annual mean ET
 - Monthly ET
- Please note that P values used vary from model to model

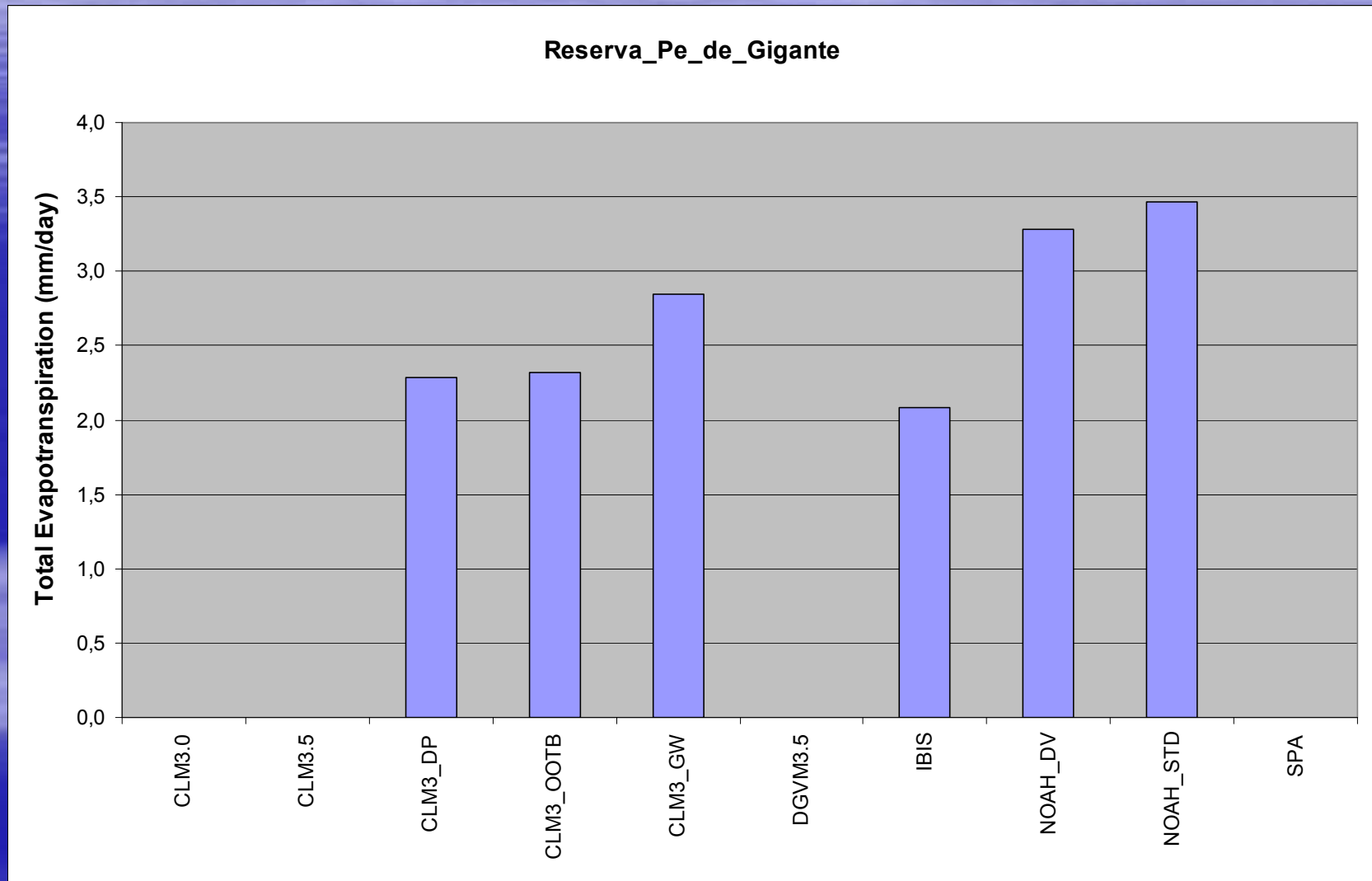
Annual ET – BAN



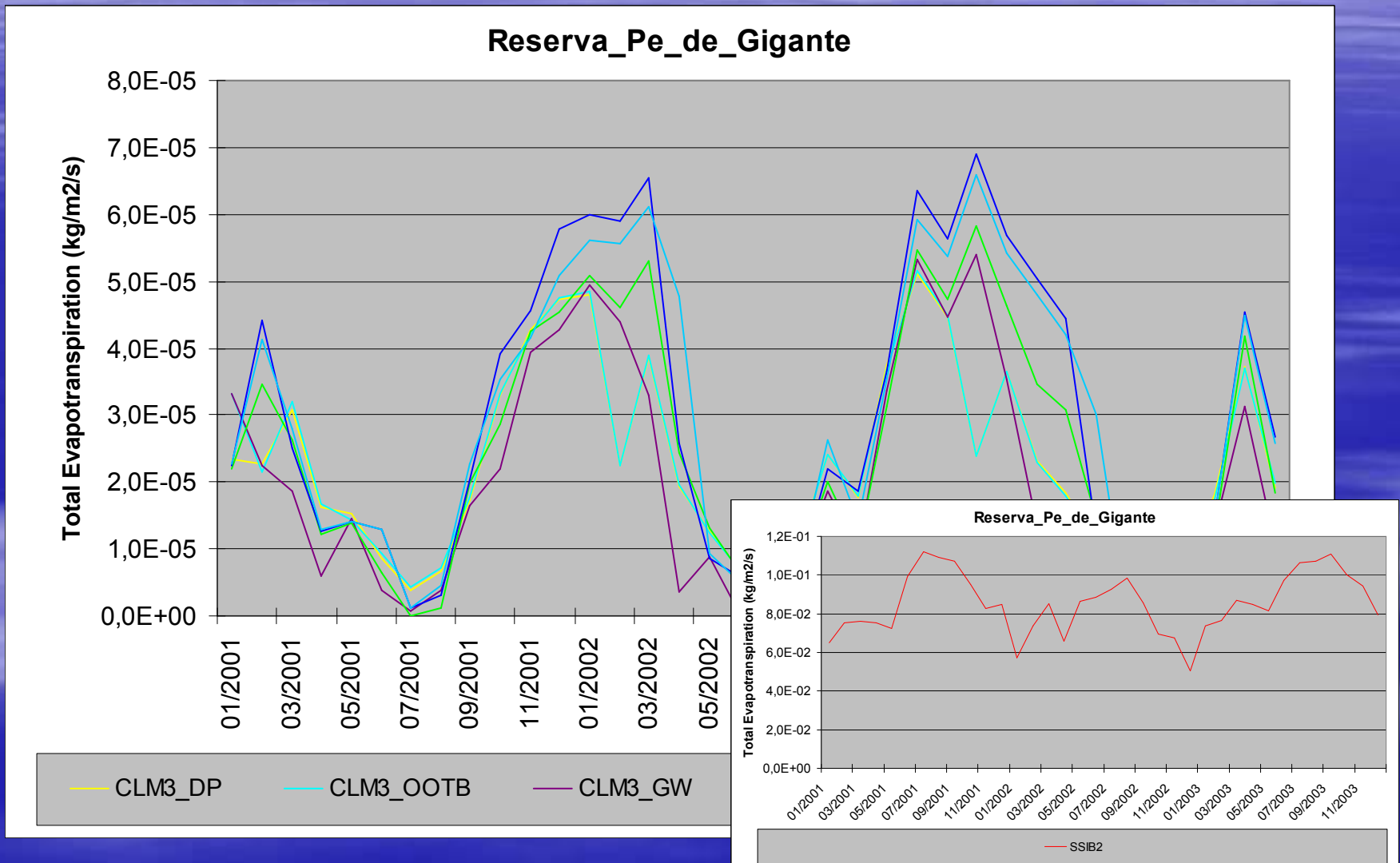
Monthly ET – BAN



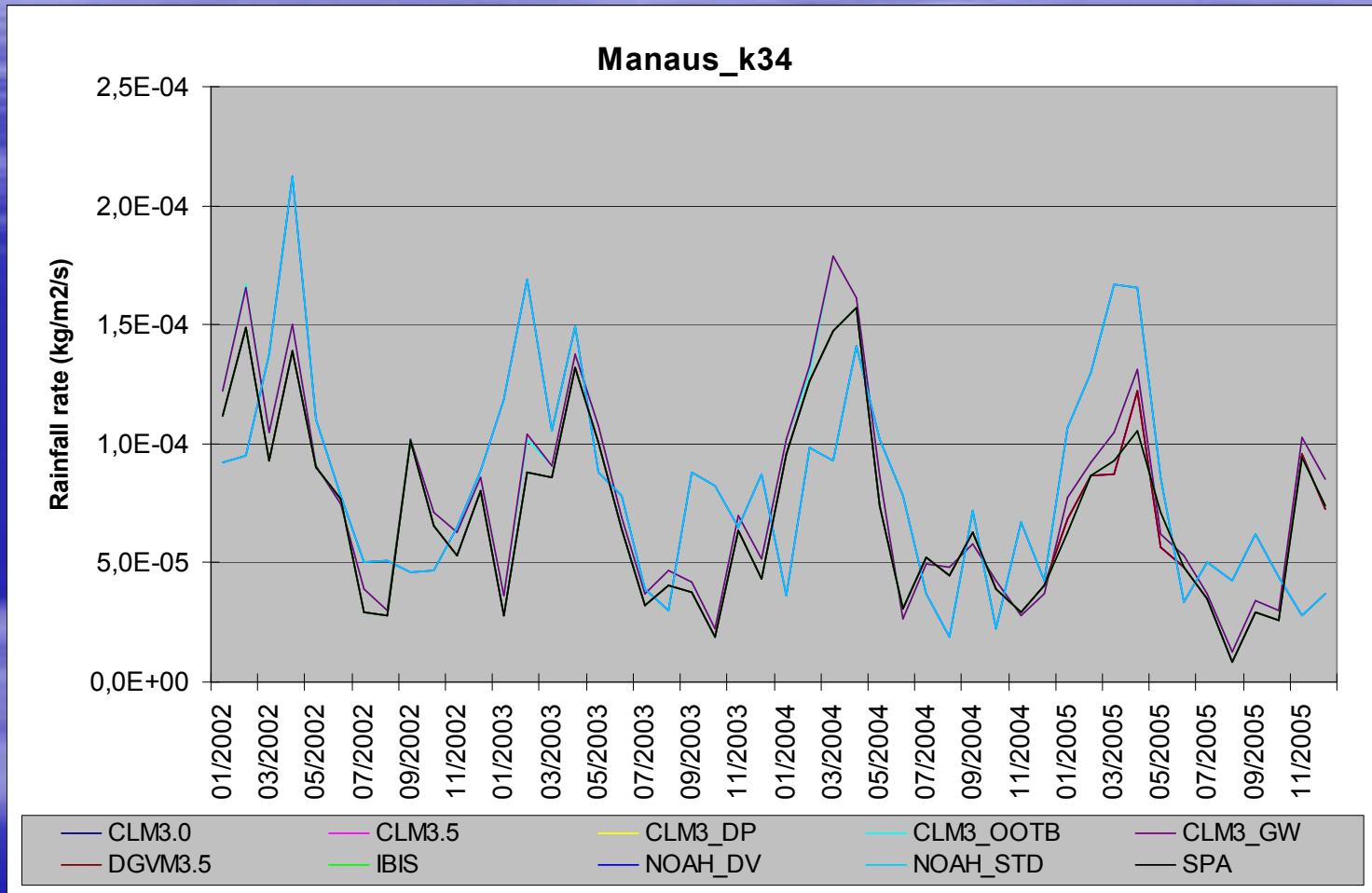
Annual ET – PDG



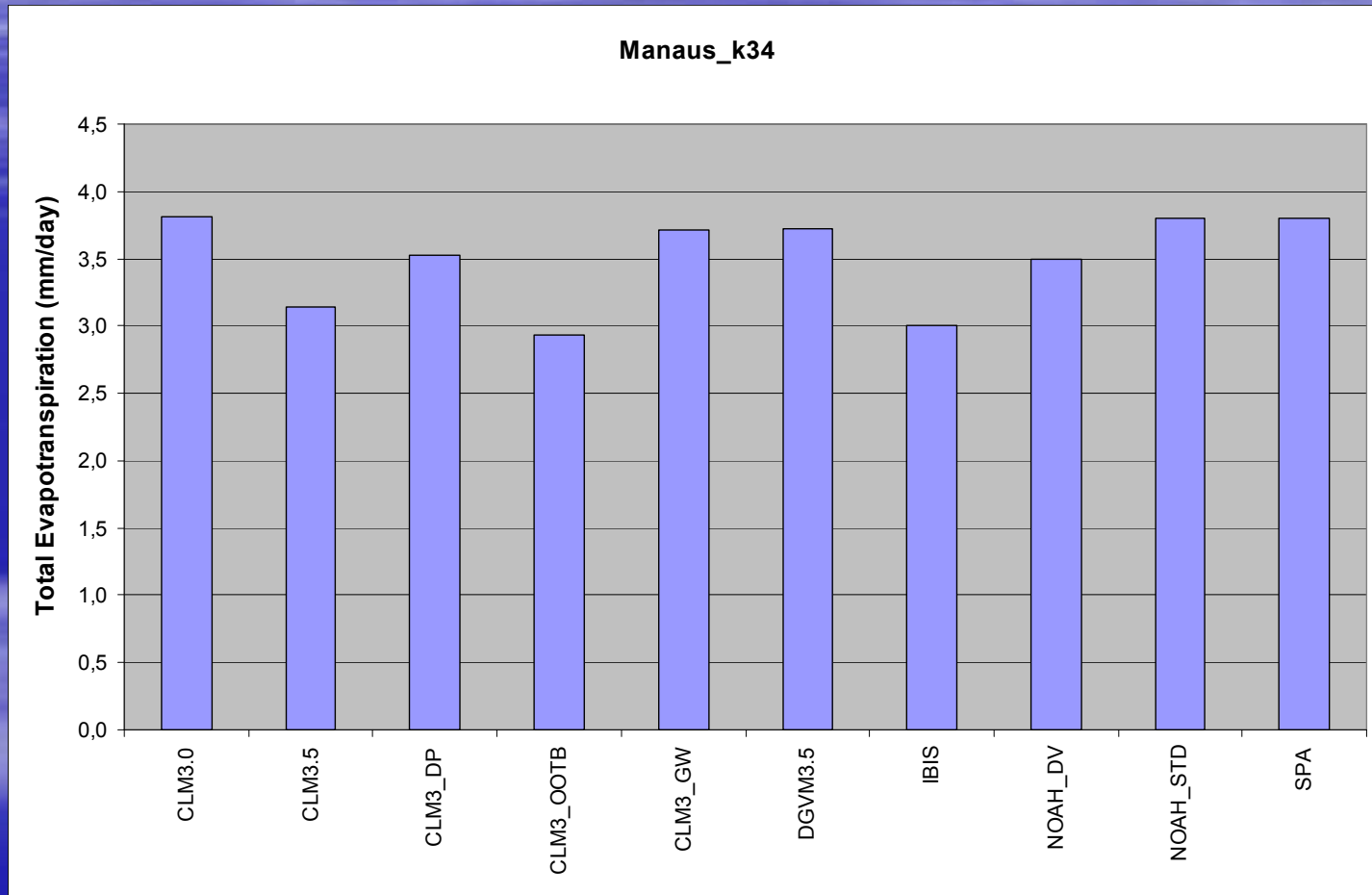
Monthly ET – PDG



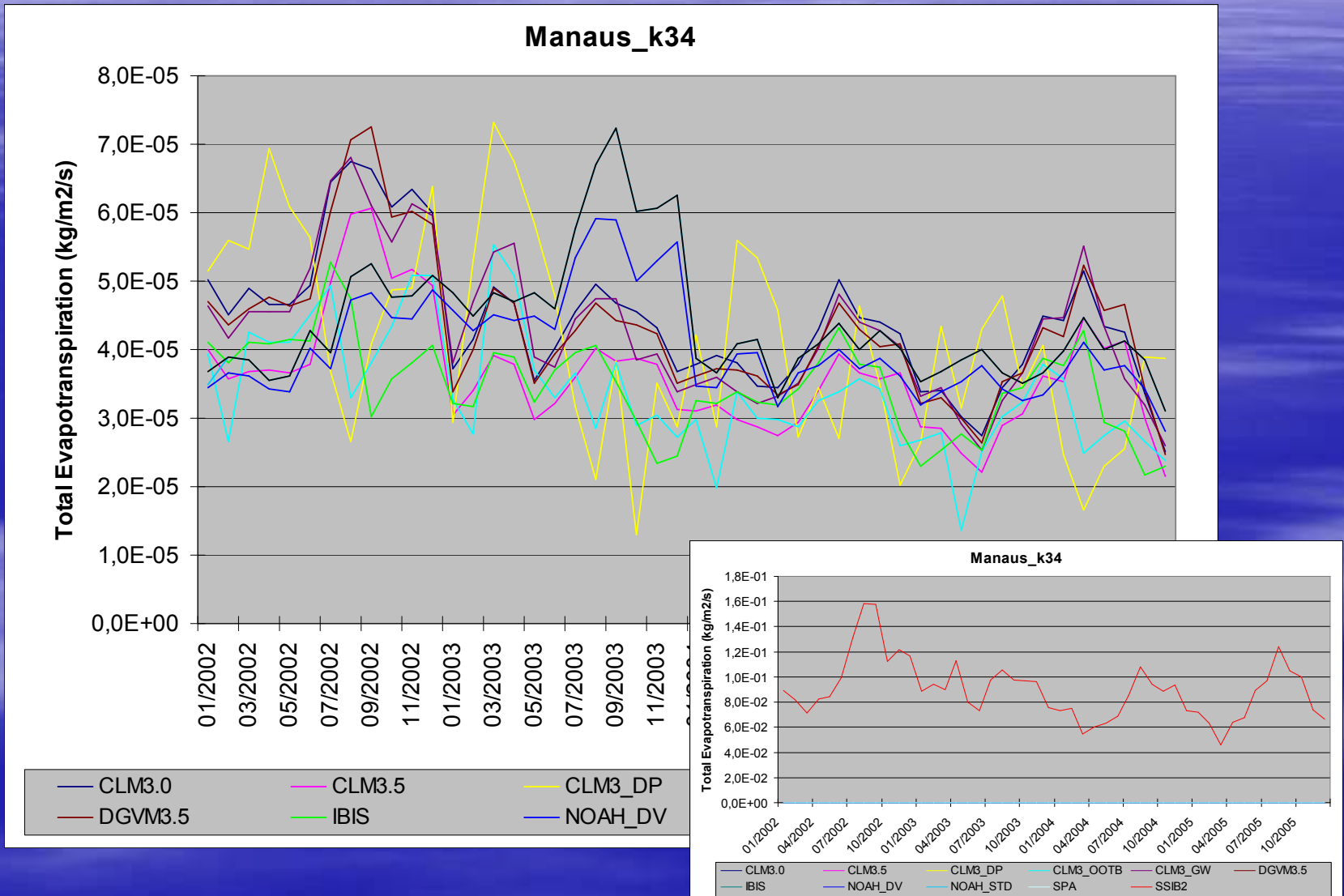
Monthly P – k34



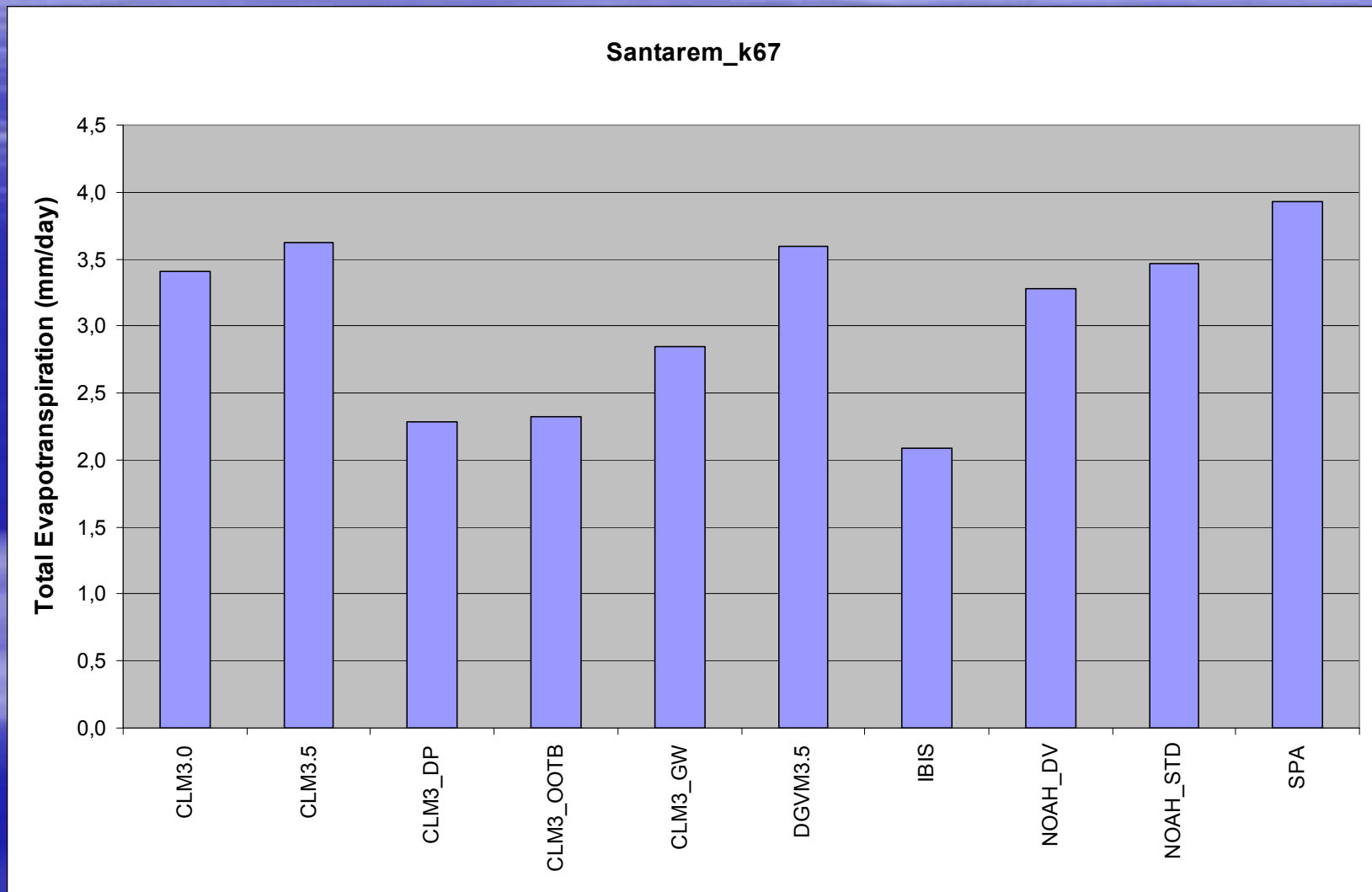
Annual ET – k34



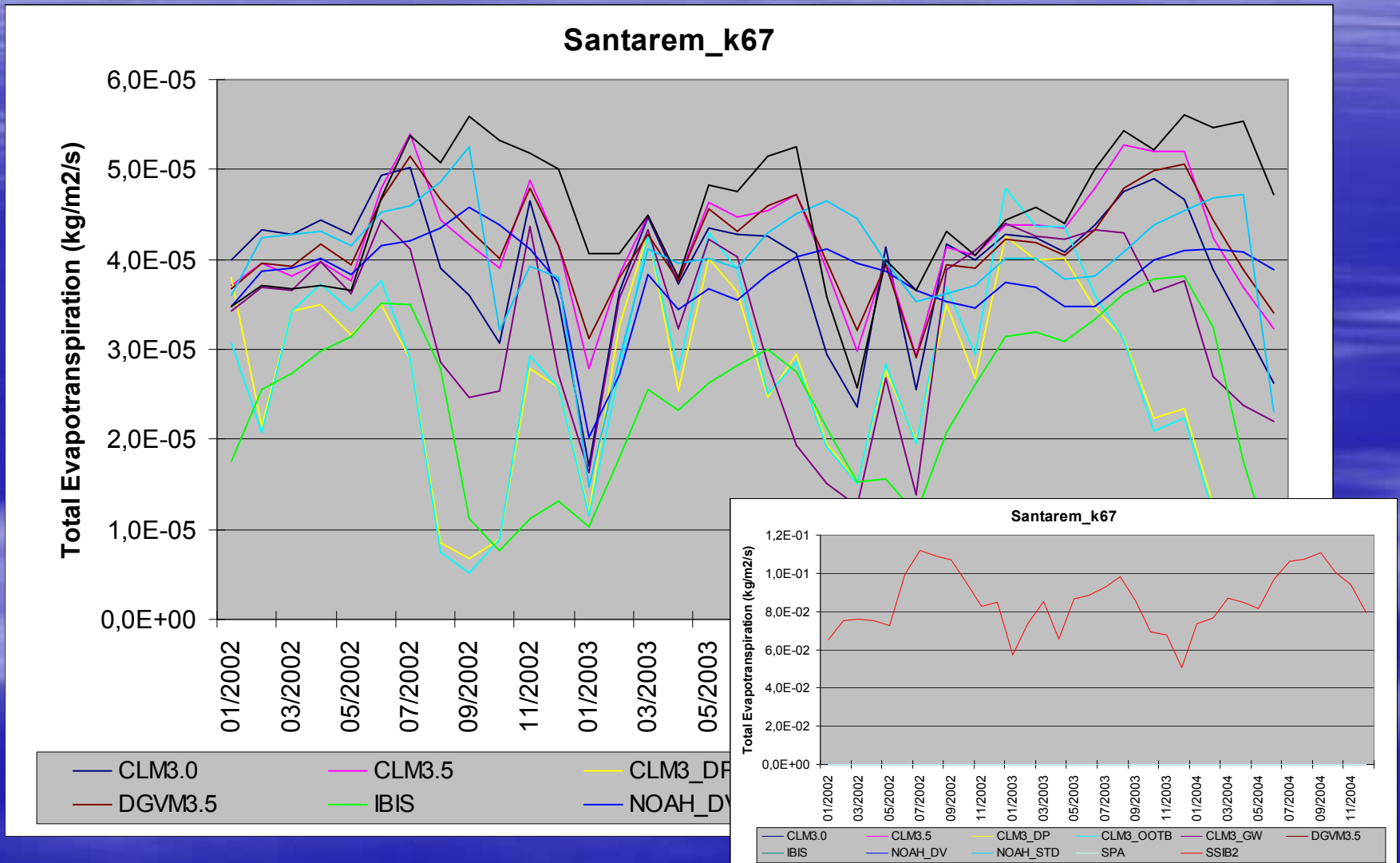
Monthly ET – k34



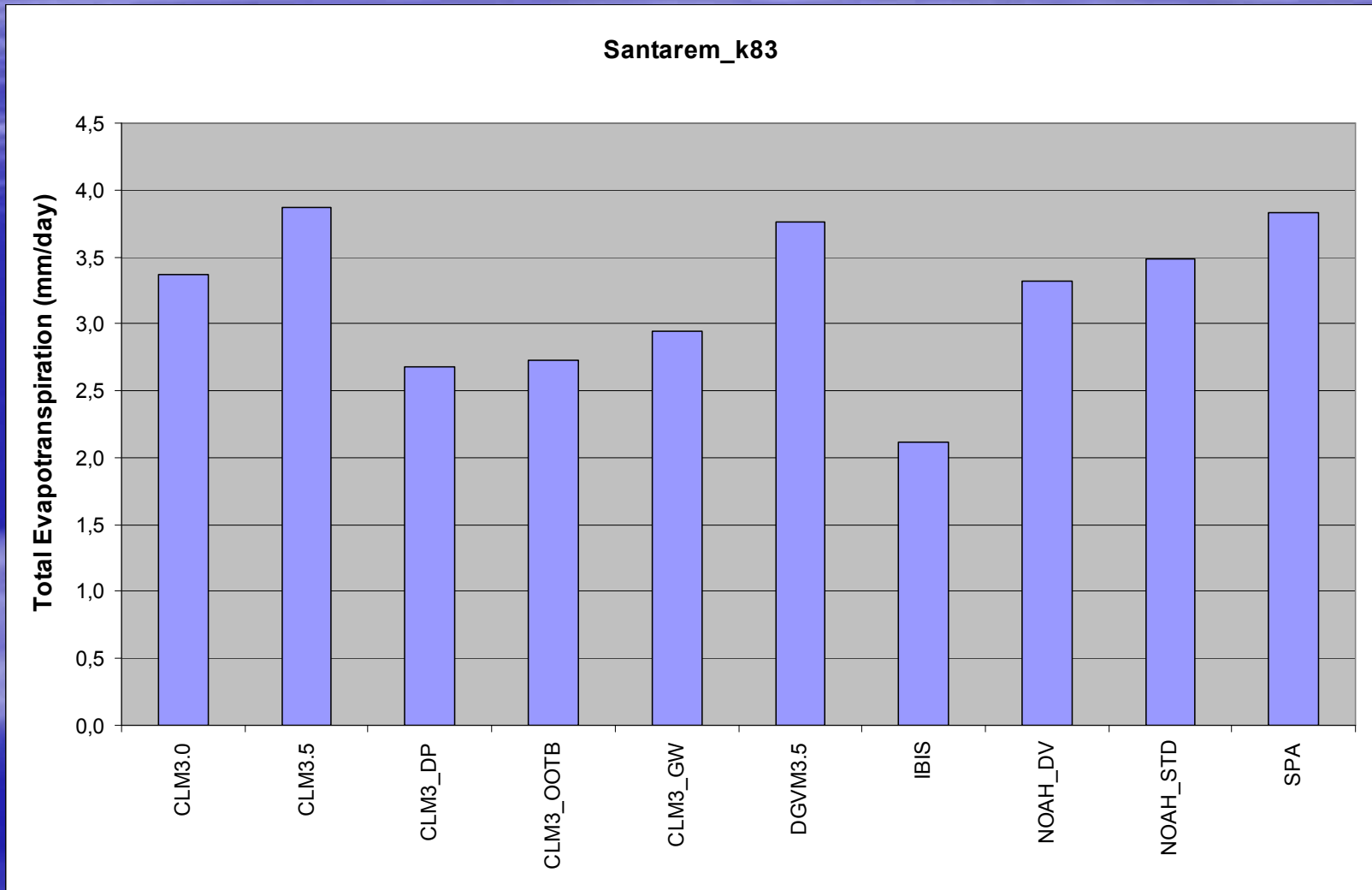
Annual ET – k67



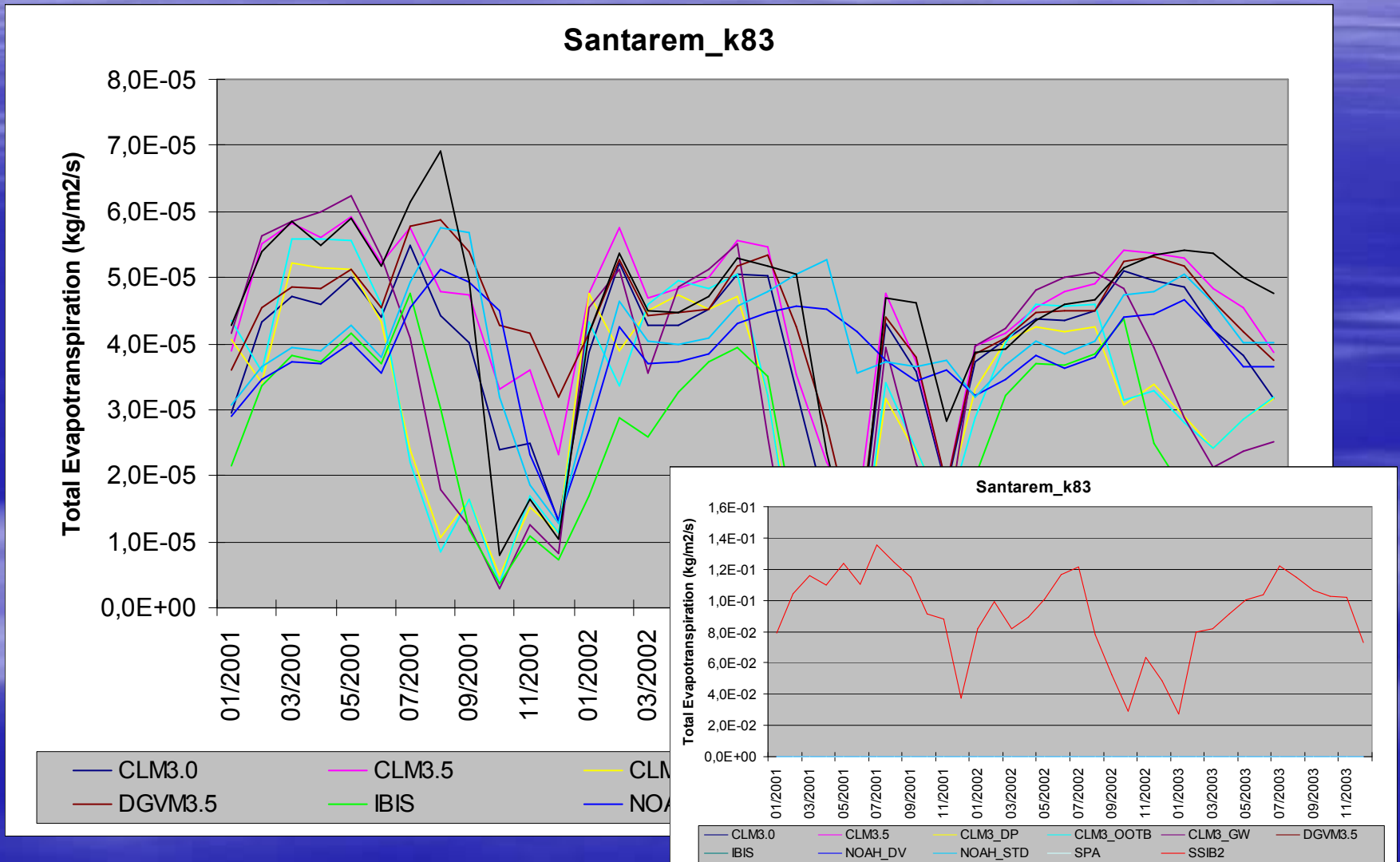
Monthly ET – k67



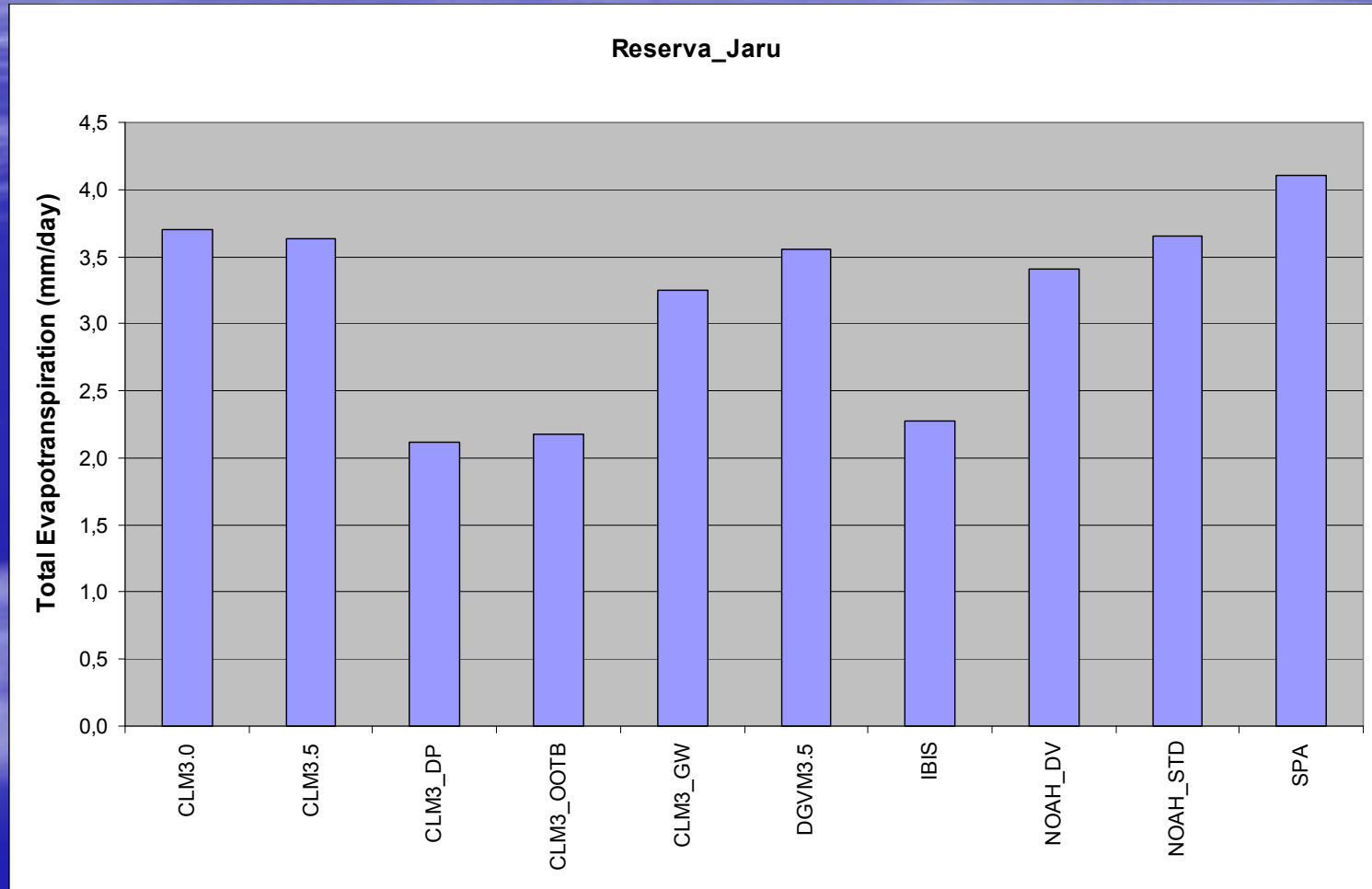
Annual ET – k83



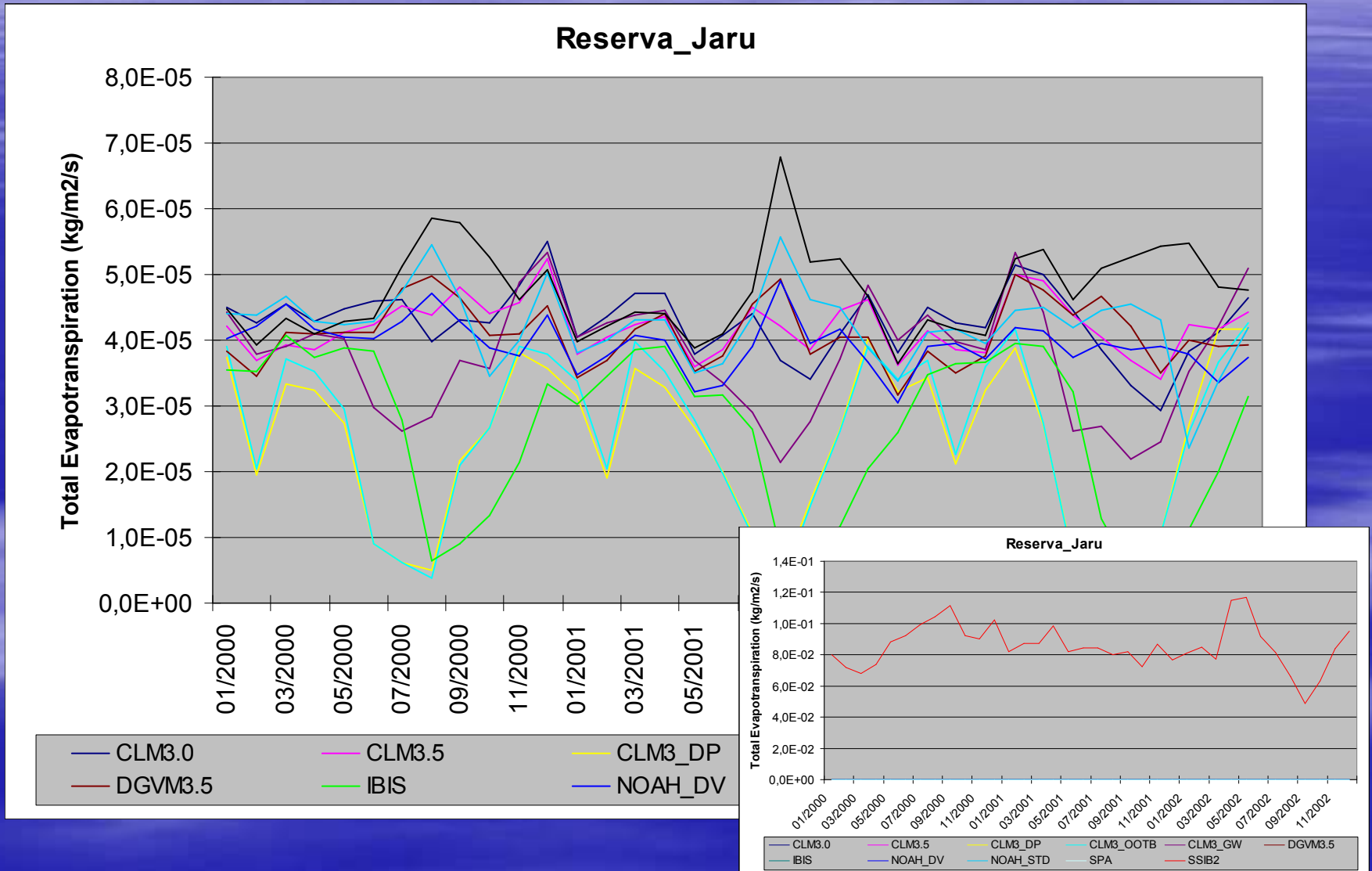
Monthly ET – k83



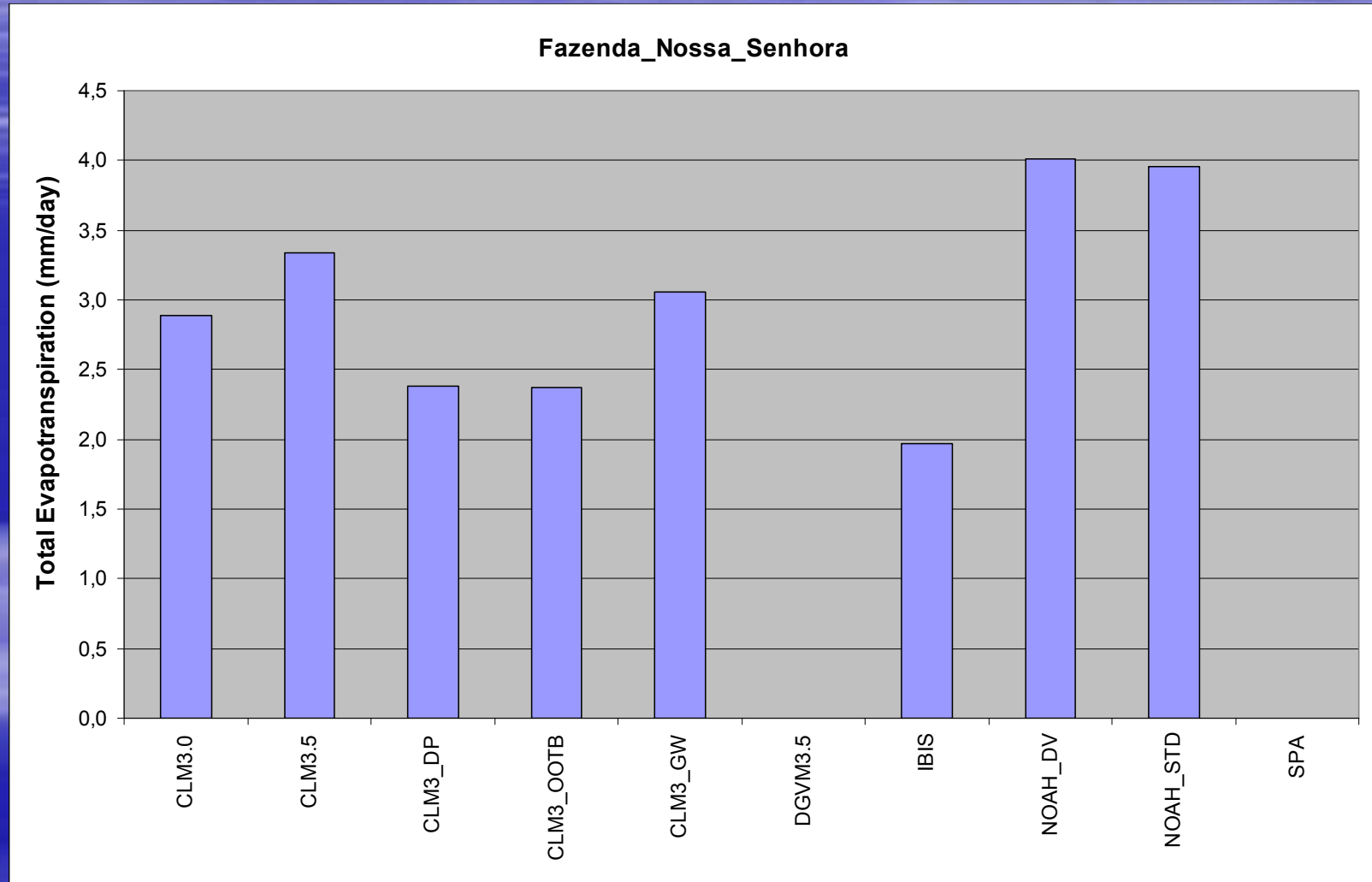
Annual ET – Jarú



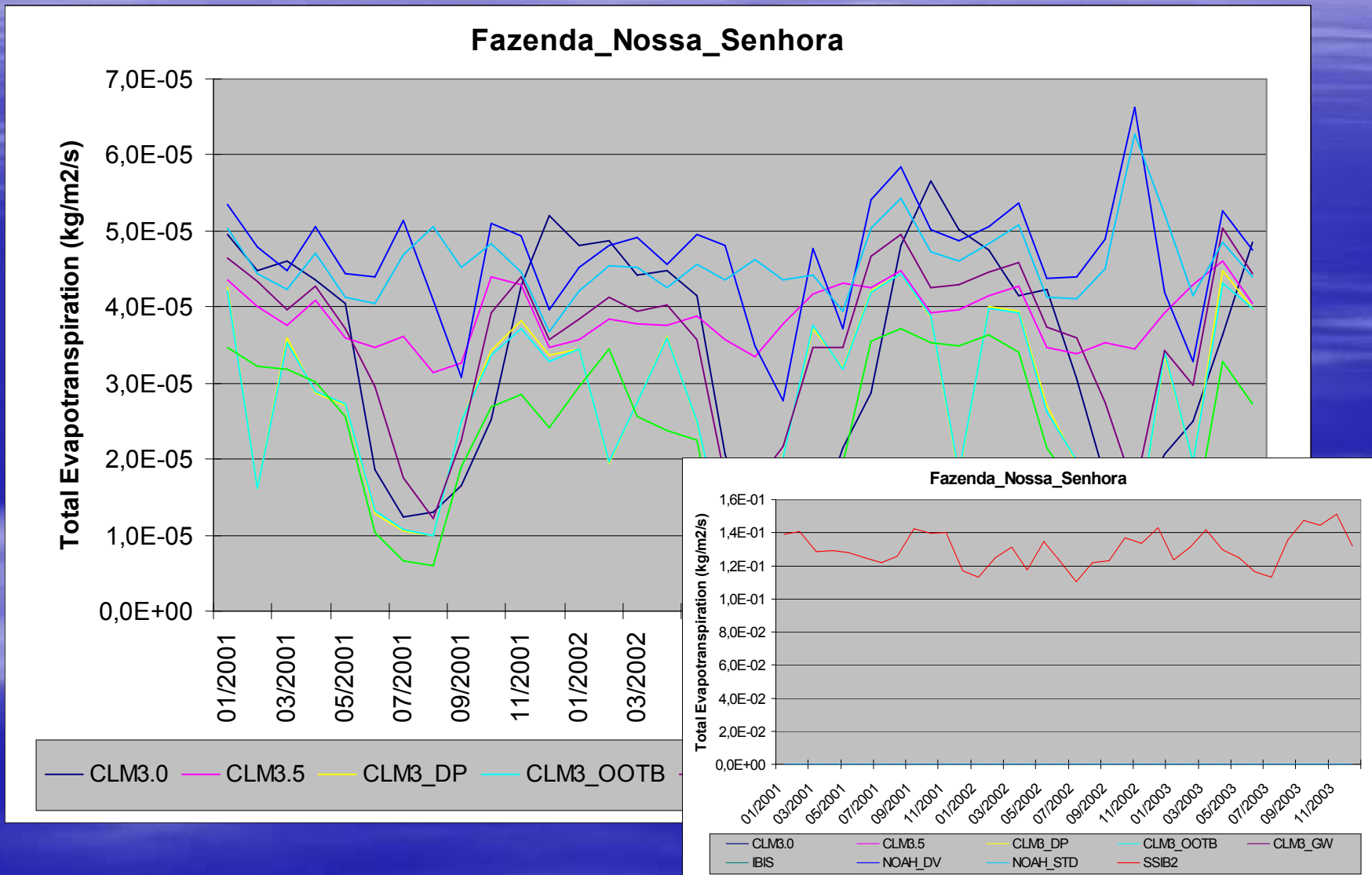
Monthly ET – Jaru



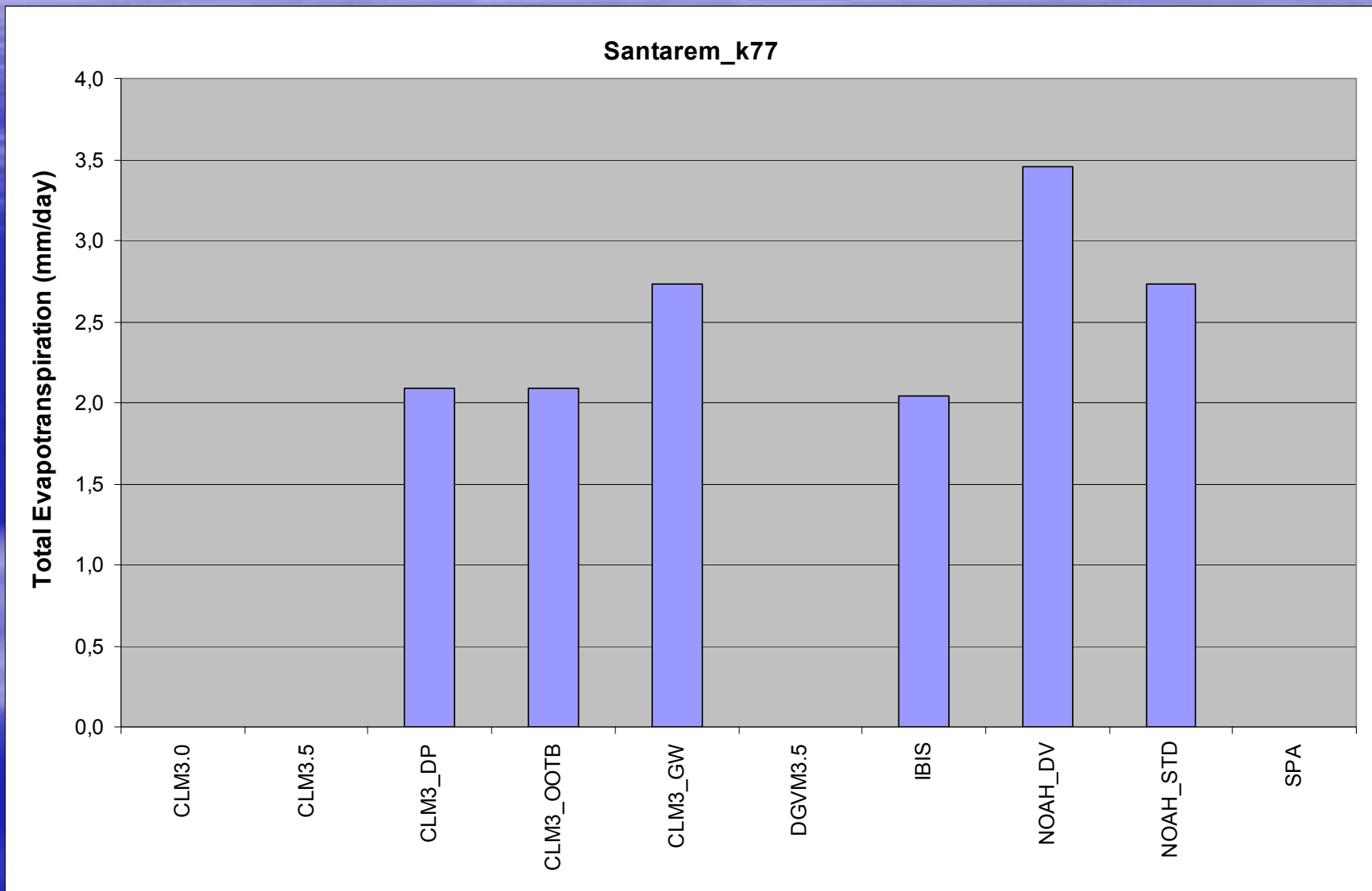
Annual ET – FNS



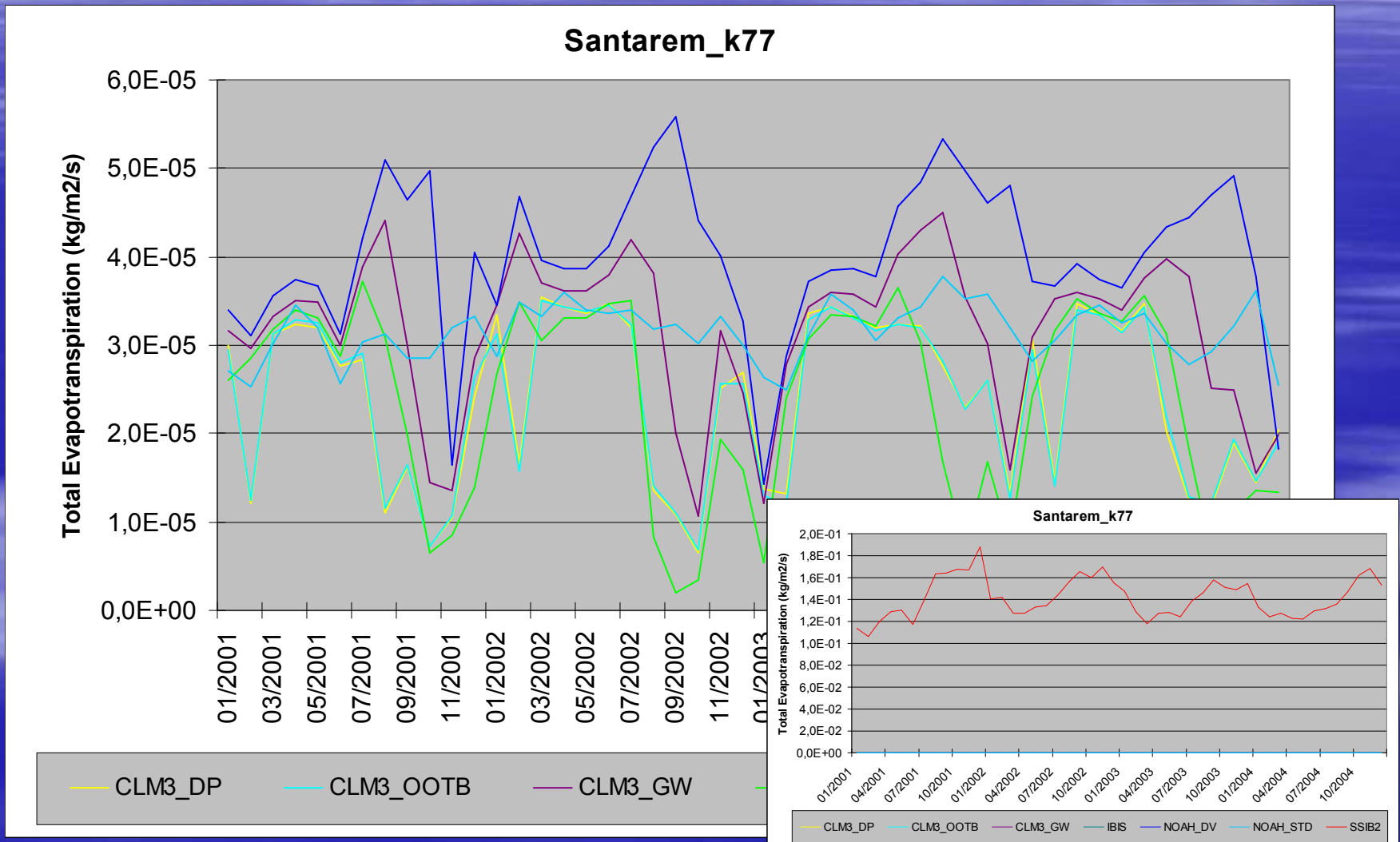
Monthly ET – FNS



Annual ET – k77



Monthly ET – k77



Summary

		P average (mm/day)	ET average (mm/day)
Forest	K34	6.45	3.50
	K67	4.23	3.08
	K83	4.32	3.21
	Jaru	4.90	3.19
Pasture	FNS	4.60	3.00
	K77	4.44	2.52
Deciduous forest / Savanna	BAN	3.50	2.83
	PDG	2.49	2.71

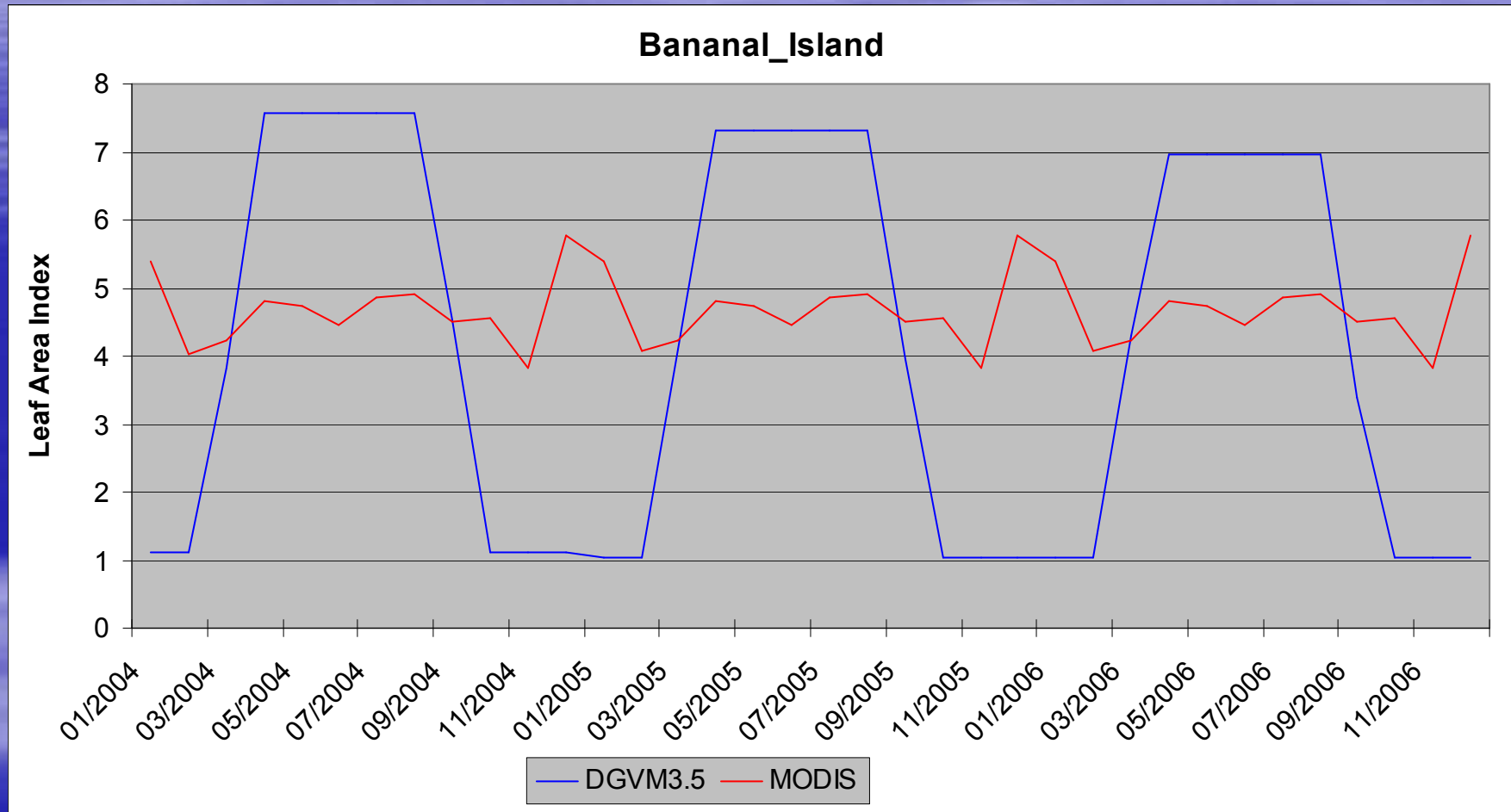
Summary

Total Evapotranspiration (mm/day)

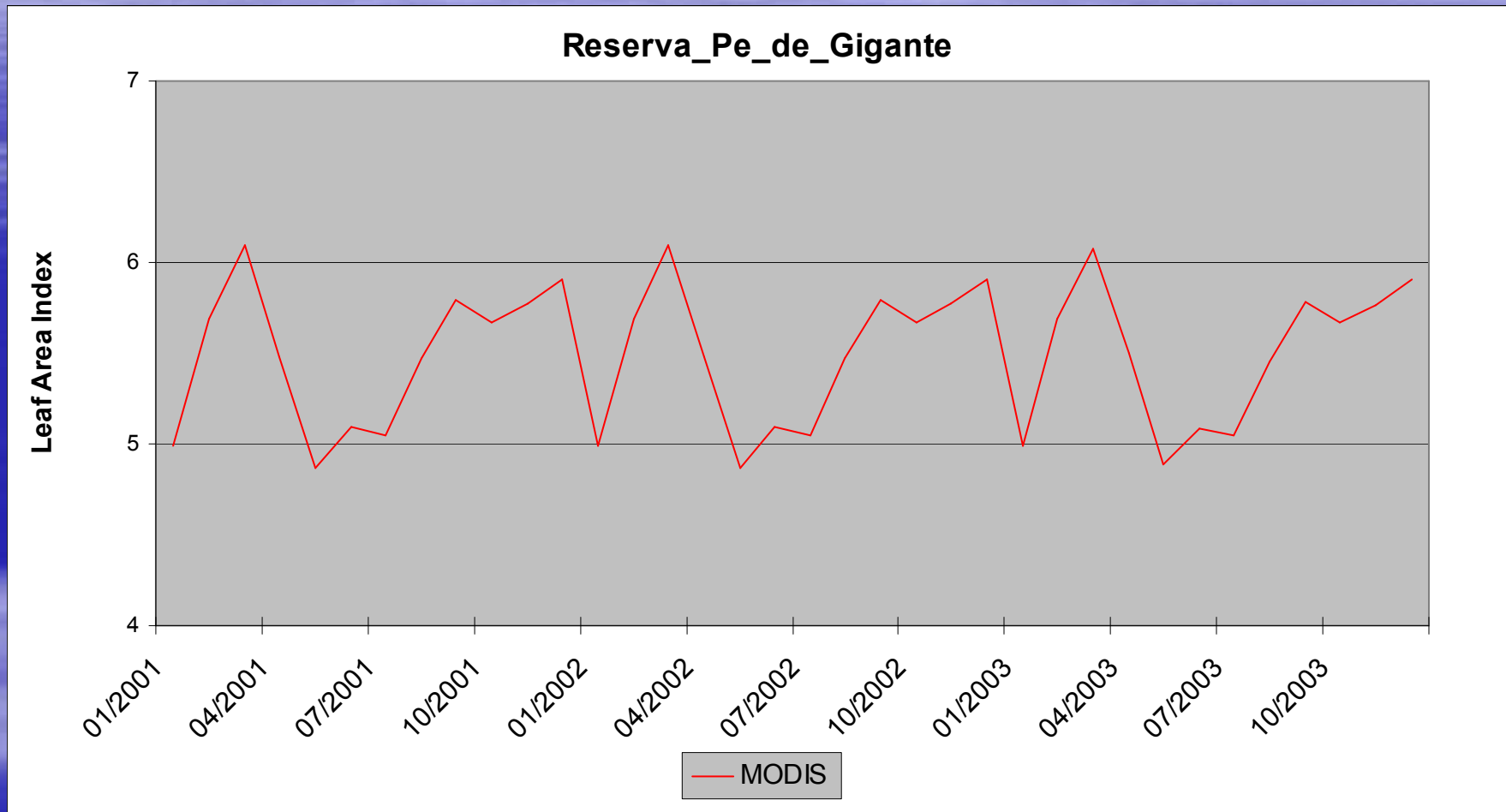
	CLM 3.0	CLM 3.5	CLM3_ DP	CLM3_ OOTB	CLM3_ GW	DGVM 3.5	IBIS	NOAH _DV	NOAH _STD	SPA
Forest	3.43	3.44	2.58	2.47	3.03	3.42	2.45	3.40	3.60	3.78
Pasture	2.88	3.34	2.24	2.23	2.89		2.01	3.73	3.34	
Savanna			2.29	2.32	2.84		2.09	3.28	3.46	

Results for LAI

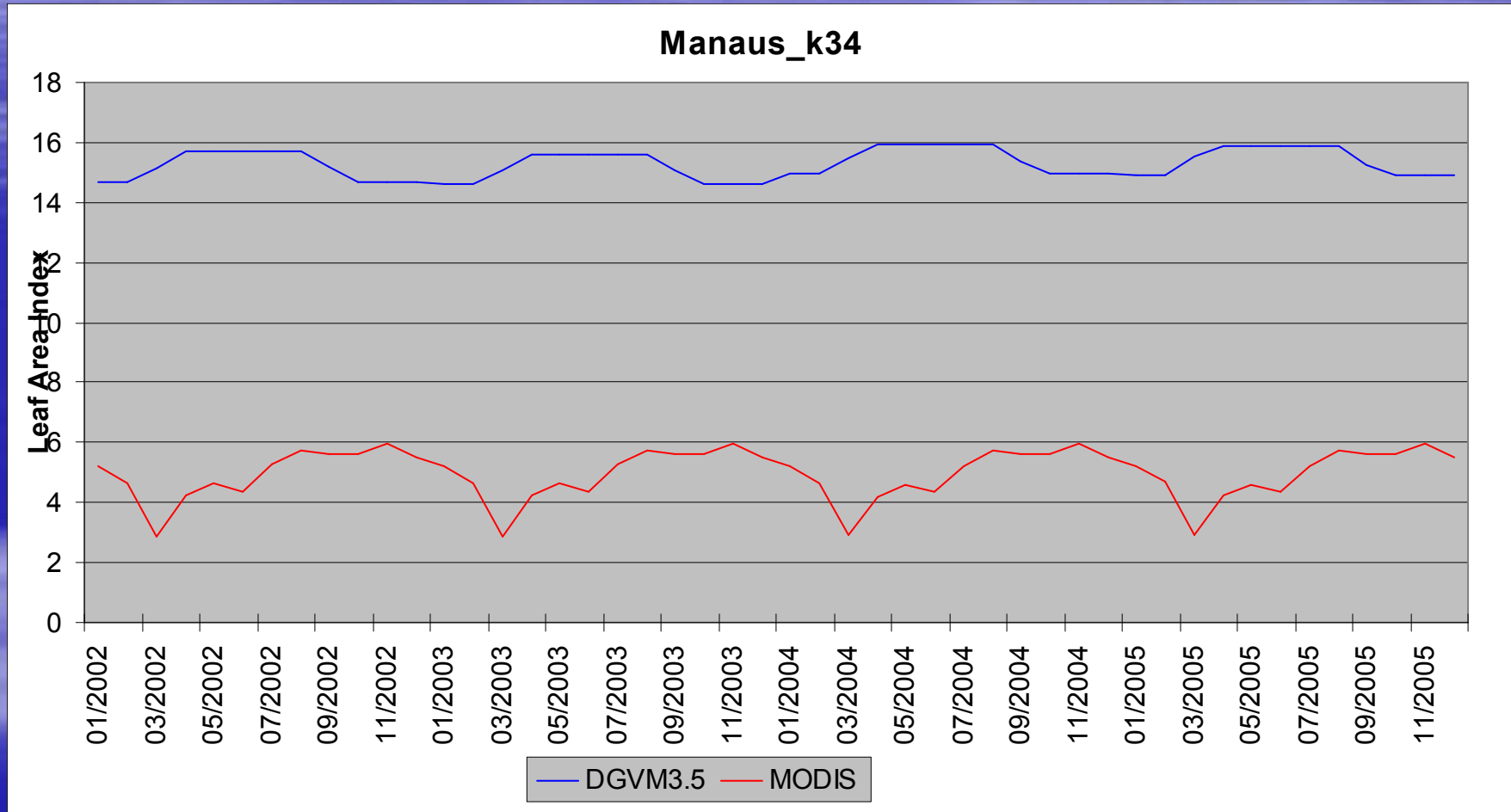
LAI – BAN



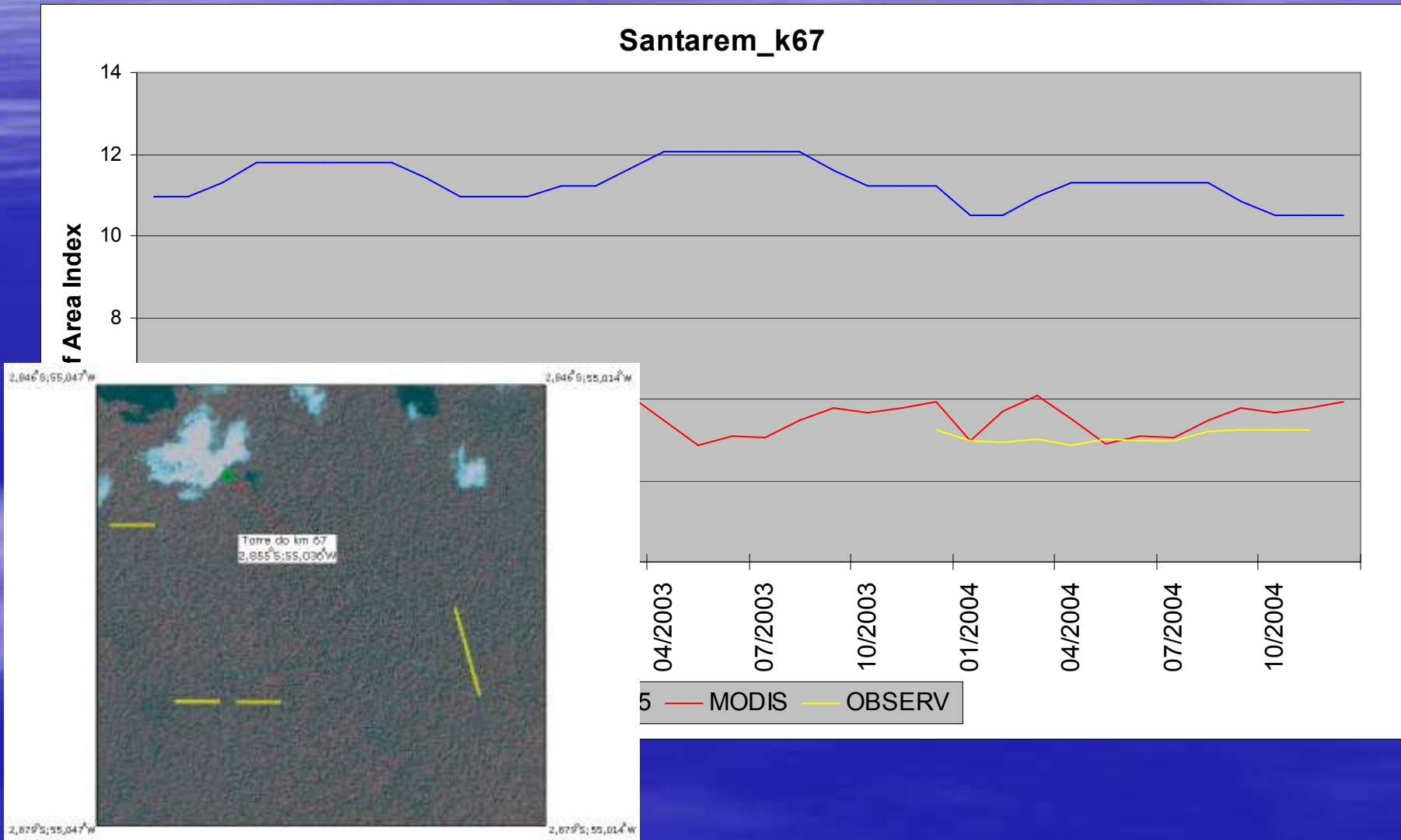
LAI – PDG



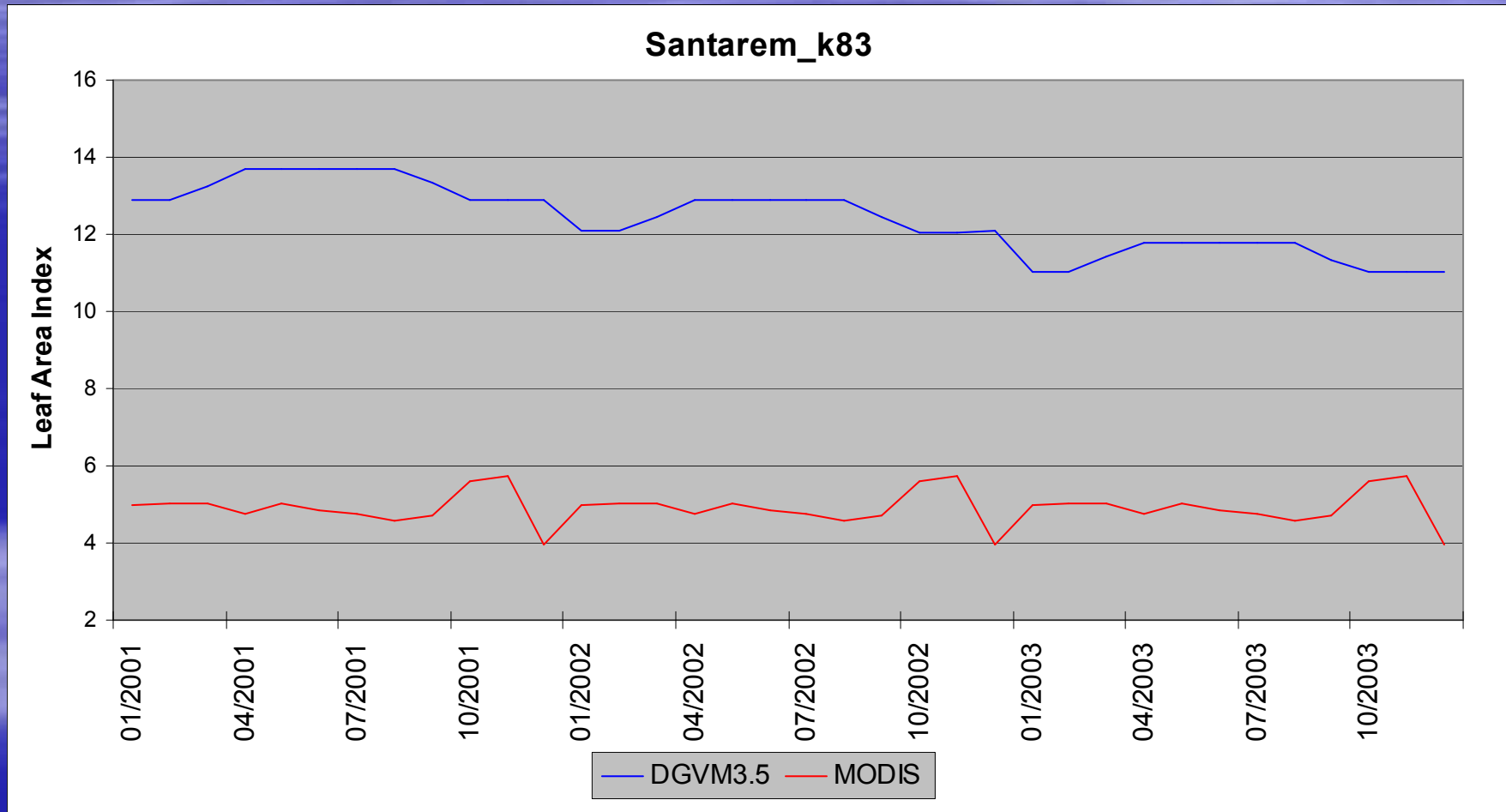
LAI - k34



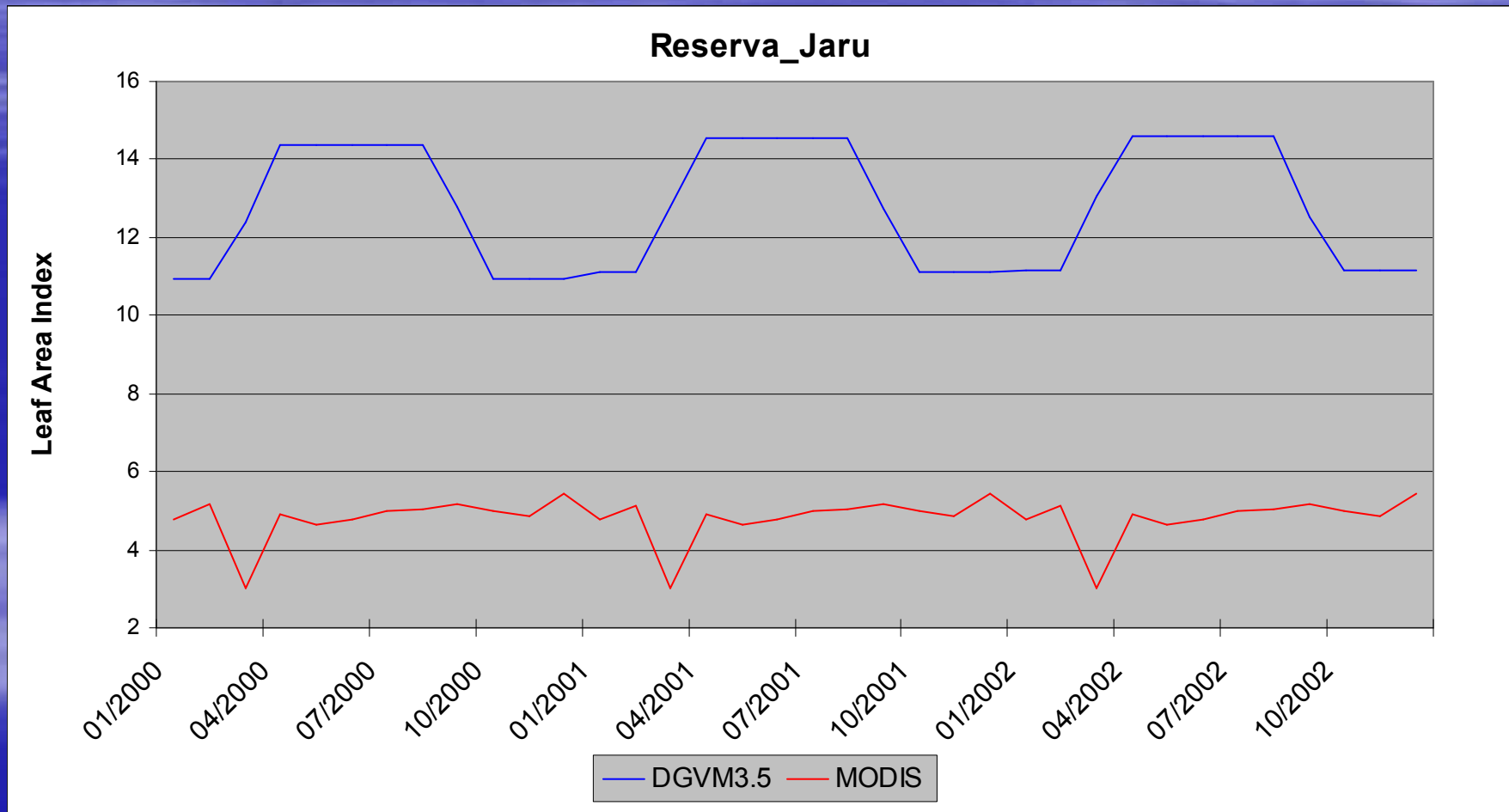
LAI - k67



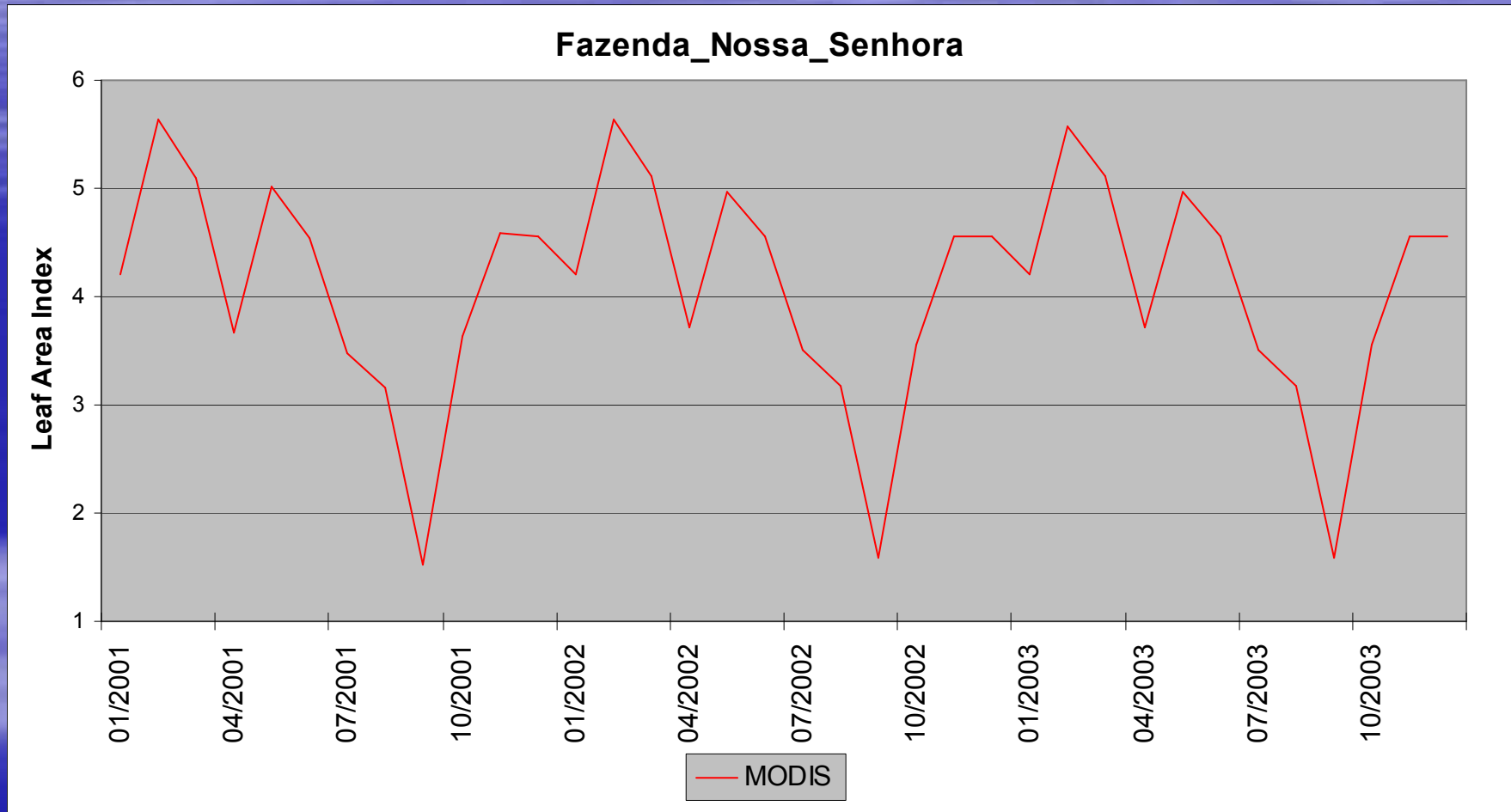
LAI - k83



LAI – Jaru



LAI – FNS



LAI - k77

